

HPLC Analysis Report

Sample: Toremifene citrate

Buffer A: 0.04% TFA in 100% water(v/v)

Buffer B: 0.04% TFA in 100% acetonitrile (v/v)

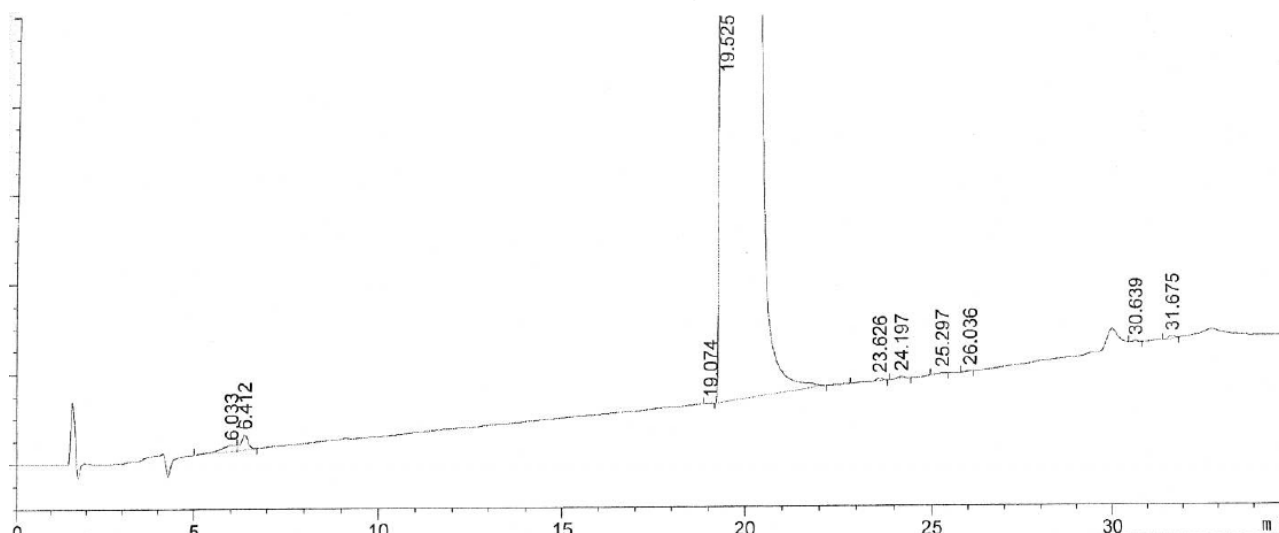
Gradient: 10-80% Buffer B in 25 min

Flow: 1ml/min Wavelength:240nm

Column: Alltima C18,4.6*250mm,5um

Date: May 19, 2014

Chromatogram



Peak#	RetTime(Min)	Width(Min)	Area(mAU*s)	Height(mAU)	Area(%)
1	6.033	0.5123	42.91820	1.39639	0.0470
2	6.412	0.2279	46.94930	3.43332	0.0514
3	19.074	0.1892	5.30563e-1	4.67334e-2	5.812e-4
4	19.525	0.4843	9.11658e4	2679.55615	99.8626
5	23.626	0.2698	11.47821	5.99932e-1	0.0126
6	24.197	0.2429	8.31106	5.42043e-1	9.104e-3
7	25.297	0.2372	2.84761	2.00052e-1	3.119e-3
8	26.036	0.1777	1.71284	1.45926e-1	1.876e-3
9	30.639	0.2017	3.87738	3.20393e-1	4.247e-3
10	31.675	0.1991	6.77216	5.6877e-1	7.418e-3
Totals			9.12912e4	2686.80781	100